

LMCS – Safe Work Procedure

BELT SANDER



DO NOT use this equipment unless you have been instructed in its safe use and operation and have passed the safety accreditation

PERSONAL PROTECTIVE EQUIPMENT



Safety glasses must be worn at all times in work areas.



Long and loose hair must be contained.



Hearing protection must be worn.



Sturdy footwear must be worn at all times in work areas.



Close fitting/protective clothing must be worn.



Rings and jewellery must not be worn.

PRE-OPERATIONAL SAFETY CHECKS

- ✓ Locate and ensure you are familiar with all machine operations and controls and emergency stops.
- ✓ Ensure the machine, power cords etc. are in safe working condition.
- ✓ Check workspaces and walkways to ensure no slip/trip hazards are present and that no one will be harmed by you operating the machine.
- ✓ Ensure all guards are fitted, secure and functional. Do not operate if guards are missing or faulty.
- ✓ Ensure table and work area is clear of all tools, off-cut timber and sawdust.
- ✓ Check that you are feeding in from the correct side.

- ✗ Do not put your hands any closer than 150 mm from the cutter head when it is rotating.
- ✗ Never leave the machine running unattended.
- ✗ Do not use heavy pressure to a point the machine slows down audibly at a starkly reduced pitch.

This SWP does not necessarily cover all possible hazards associated with this equipment and should be used in conjunction with other references. It is designed as a guide to be used to compliment training and as a reminder to users prior to equipment use.

This information is modified from Frontline Safety www.frontline.edu.au

Issued	Issued For	Prepared	Checked	Approved	Rev.
25.09.2022	Endorsement by Safety Com	A Oldham C de Groot			01

OPERATIONAL SAFETY CHECKS

- ✓ Plug in the machine.
- ✓ Allow the cutter to obtain maximum speed before making a cut.

ENDING OPERATIONS AND CLEANING UP

- ✓ Switch off the machine when work completed.
- ✓ Leave the machine in a safe, clean and tidy state.

POTENTIAL HAZARDS AND INJURIES

- Kickback: wood may catch or jam and be flung back violently.
- Airborne dust.
- Eye and hearing injuries.
- Contact with sanding medium at point of operation, potentially severe injuries.

DON'Ts

- ✗ Do not use operate equipment without wearing appropriate PPE.
- ✗ Do not use faulty equipment. Immediately report suspect equipment.
- ✗ Do not surface irregular stock, branches or wood with embedded nails or screws.

Safe Operating Procedures – BELT SANDER

BACKGROUND INFORMATION & READING

This video will assist you in following safe work practices:

[Kantenschleifmaschine HS 950 von Hammer® | Felder Group - Bing video](#)

Although this video has a German title there is no German speech or writing in this video. The depictions are very accurate.

Videos need to be viewed prior to arranging an assessment.

FITNESS TO OPERATE BELT SANDER

Members are expected to refrain from working on these power tools and machines if they acknowledge their own level of physical ability inhibits them from doing so safely.

However, if assessors determine that a member has some level of physical impairment that makes it unsafe to use machines, they will have no option other than to assess the member as not having the capacity to do so safely.

You can still do your projects, just mark the timber and ask another shed member to cut/machine the timber for you. You are not compelled to cut the timber yourself and in this environment, you will easily find others that are more than able and willing to do the cutting for you.

GENERAL RULES & TIPS

- If recycled material is used, all timber **MUST** be visually checked for nails and screws. After that the timber **MUST** also be checked with the metal detector. Processing CCA treated timber is not permitted.
- Timber with paint, oils or varnishes must not be run through the sanding equipment.
- When commencing operation ensure dust extraction system is switched on either manually or automatically.
- When adjusting the angle be aware that the motor assembly needs to be supported as the pivot is not completely balanced.
- Adjust the angle and height of the table. When working on the machine for a long duration move the table up or down to make sure the belt is wearing evenly.
- When sanding an edge it is most important to place the timber on the stop and make sure the trailing edge makes contact first. Then move the leading edge towards the sanding belt.
- Press the timber only very lightly.
- The sander may only be used on timber. In other words no metals or plastics.
- If sanding plastics is required, then speak with the supervisor. It requires very delicate moves otherwise the plastic may melt and damage the belt. The supervisor may also direct you to use hand sanding or the smaller machines.

If the sanding media becomes clogged or needs replacement please liaise with the supervisor as solving these issues are NOT covered in the scope of this procedure.

Use of sanding cleaner stick is encouraged and permitted for LMCS members, but use it when resting on the stop (see figure 2).



Figure 1, The Hammer belt sander



Figure 2, please note the stop

LAKE MONGER COMMUNITY SHED



Figure 3, please note timber against the stop and trailing edge making contact first

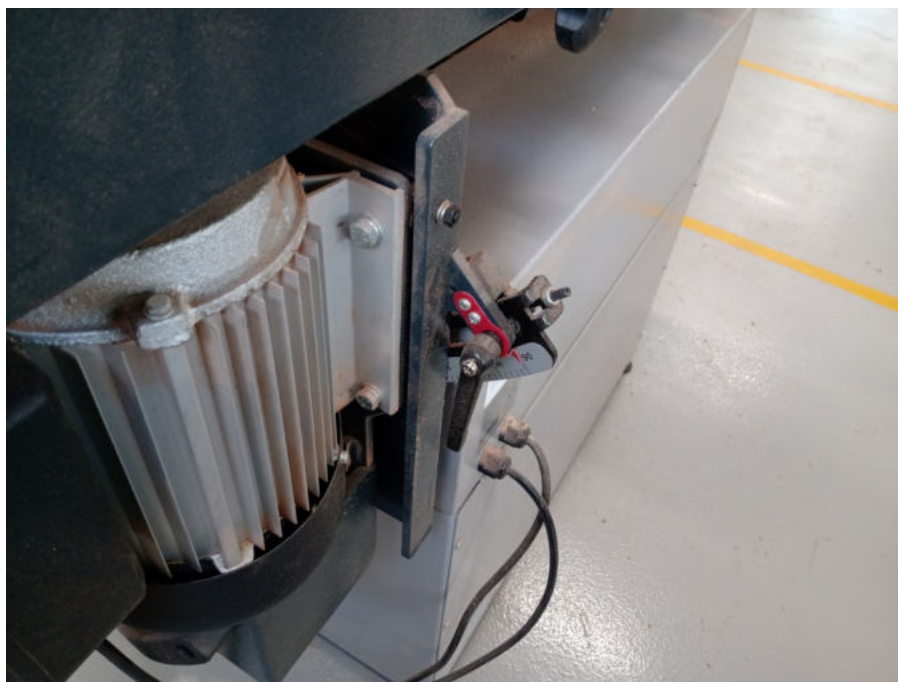


Figure 4, Angle adjustment mechanism